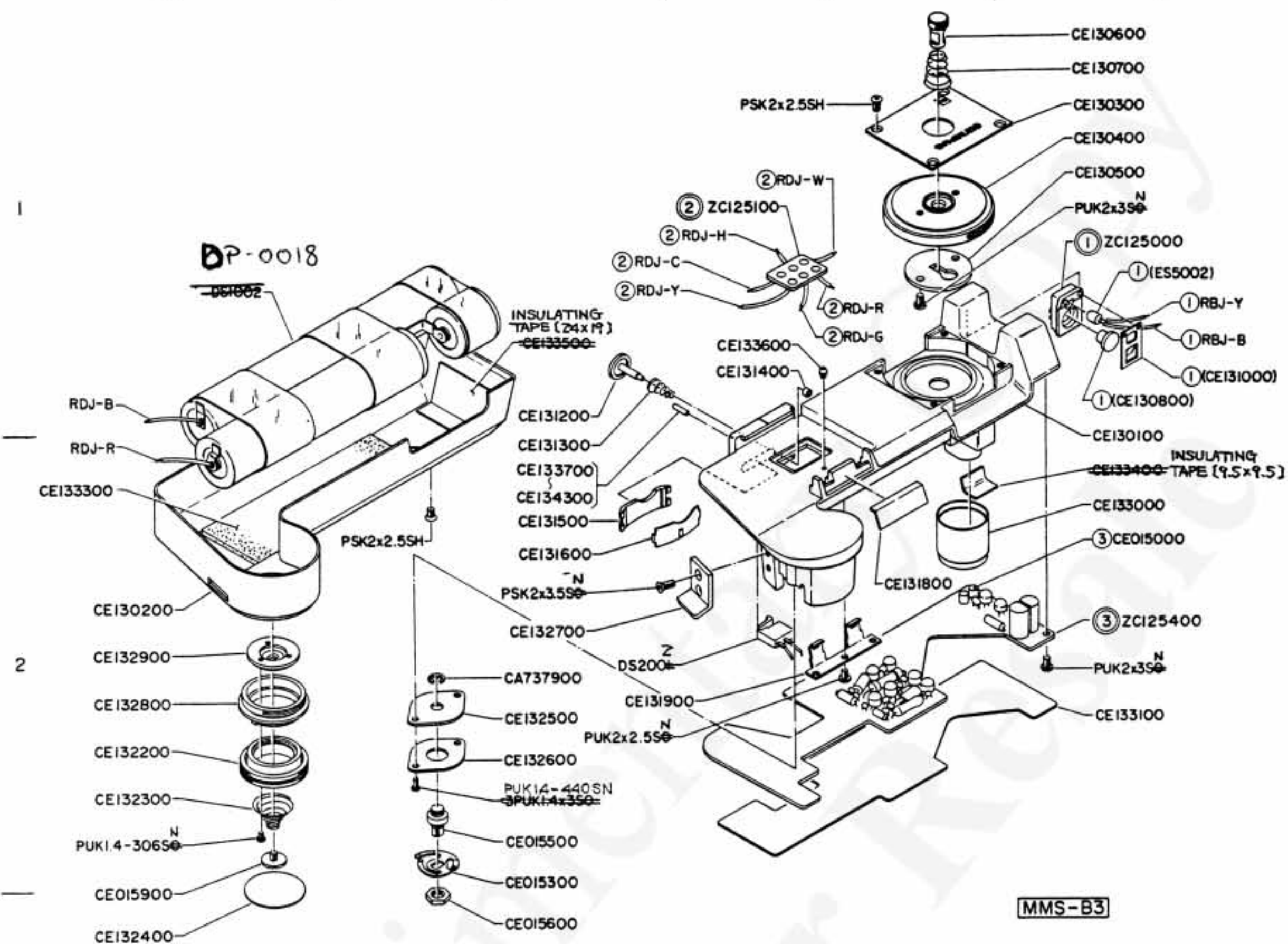


A

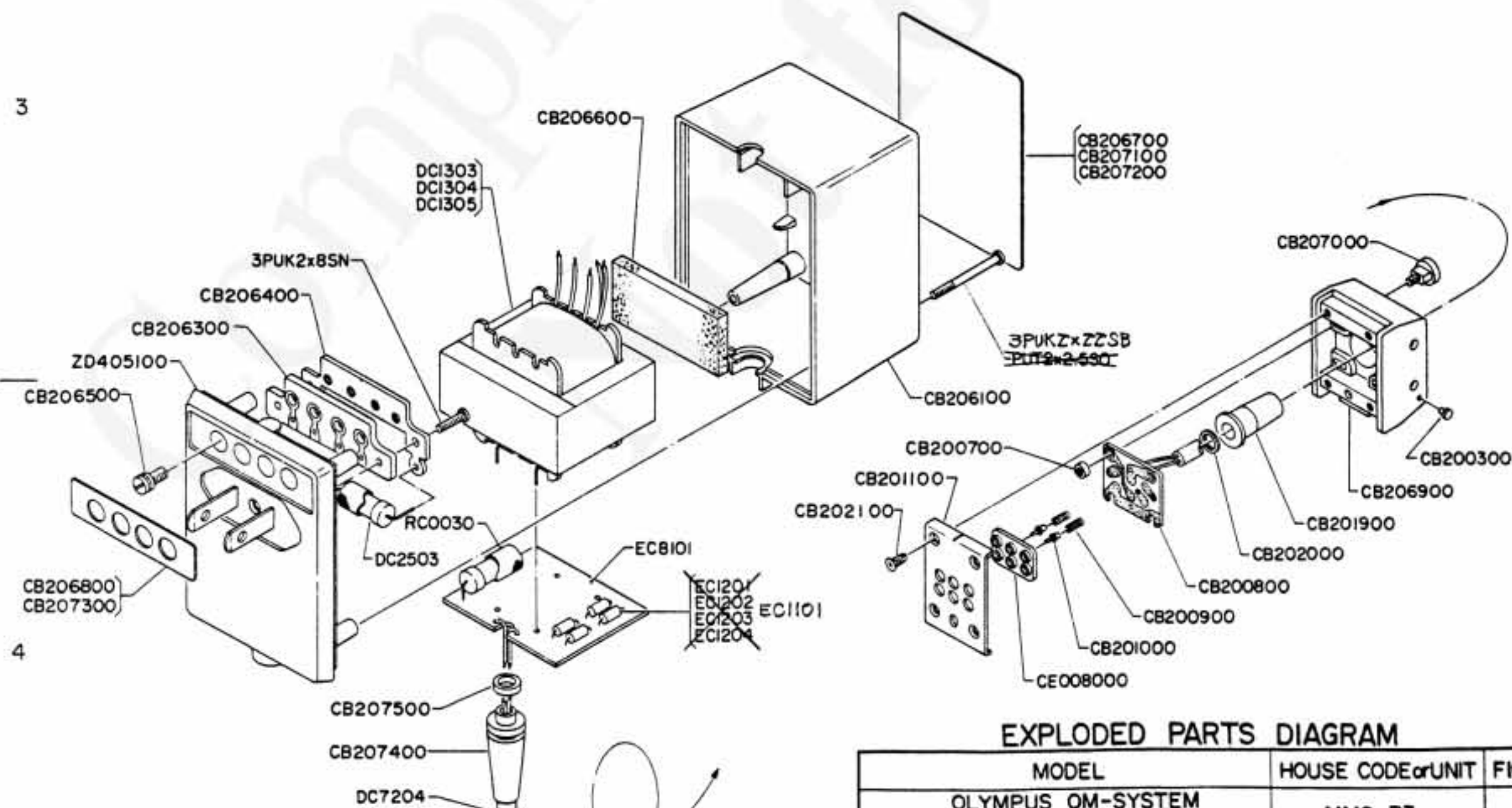
B

C

D



MMS-B3



MMS-Q1

EXPLODED PARTS DIAGRAM

MODEL	HOUSE CODE or UNIT	FIG.
OLYMPUS OM-SYSTEM M15V Ni-cd CONTROL PACK 1	MMS-B3	1/1
OLYMPUS OM-SYSTEM M15V Ni-cd CHARGER 1	MMS-Q1	

OLYMPUS OPTICAL CO., LTD. TOKYO, JAPAN

NOTE: WHEN ORDERING FOR SPARE PARTS, PLEASE CLARIFY A MODEL, PARTS NUMBER AND QUANTITY.

PARTS LIST

MMS-B3 (TYPE1&2)

PARTS No.	NAME OF PARTS	NOTE	PARTS No.	NAME OF PARTS	NOTE
CA737900	E RING 20	B2	PUK1. 4-306SN	SCREW	WE115383
CA807600	TUBE		PUK1. 4-440SN	SCREW	WE115372
CE015000	CONTACT PIN	D2	PUK 2 x2. 5SN	SCREW	WE115258
CE015300	RS CONTACT	B2	PUK 2 x 3 SN	SCREW	WE115279
CE015500	RS SHAFT	B2	PSK 2 x2. 5SH	SCREW	WE107117
CE015600	RS NUT	B2	PSK 2 x3. 5SH	SCREW	WE107127
CE015900	PINCH SCREW	A2			
CE130400	KNOB	D1			
CE130500	KNOB WASHER	D1			
CE130600	FIXED SCREW	D1			
CE130700	FIXED SPRING	D1			
CE131200	R BUTTON	B1			
CE131300	R SPRING	B2			
CE131400	BUTTON STOPPER	C1			
CE131500	LOCK KNOB	B2			
CE131600	LOCK SPRING	B2			
CE131800	FRONT COVER	C2			
CE131900	STOPPER SPRING	C2			
CE132300	RS SPRING	A2			
CE132400	RS COVER	A3			
CE132500	RS BASE 1	B2			
CE132600	RS BASE 2	B2			
CE132700	STRAP EYELET	B2			
CE132800	RS WASHER	A2			
CE132900	RS PLATE	A2			
CE133100	INSULATING PLATE	D2			
CE133300	BATTERY FASTENER	A2			
CE133600	SET SCREW	C1			
CE133700	RELEASE PIN	L = 3. 9			
CE133800	RELEASE PIN	L = 4. 1			
CE133900	RELEASE PIN	L = 4. 3			
CE134000	RELEASE PIN	L = 4. 5			
CE134100	RELEASE PIN	L = 4. 7			
CE134200	RELEASE PIN	L = 4. 9			
CE134300	RELEASE PIN	L = 5. 1			
ZC125000	CH BASE ASS' Y	D1			
ZC125100	LEAD PLATE ASS' Y	C1			
ZC125400	BASE PLATE ASS' Y	D2			
				<u>FOR TYPE-2</u>	
			CE226100	MAIN BODY	D2
			CE226200	B CASE	A2
			CE226300	KNOB COVER	D1
			CE226400	KNOB	D1
			CE226600	RS KNOB	A2
			CE226700	INSULATION TAPE	B1

PARTS LIST

MMS-B3 (TYPE1&2)

PARTS No.	NAME OF PARTS	NOTE	PARTS No.	NAME OF PARTS	NOTE
DS031700	TRANSISTOR Q101~Q104 Q106, 7 Q201. 2. 3		RBJ B	LEAD WIRE (BLACK)	L:10m
DS056400	TRANSISTOR Q105		RBJ Y	LEAD WIRE (YELLOW)	L:10m
DS056500	TRANSISTOR Q108		RDJ B	LEAD WIRE (BLACK)	L:10m
DC195000	CAPACITOR C101 16V 6.8 μ F		RDJ C	LEAD WIRE (BROWN)	L:10m
DC196000	CAPACITOR C102 16V 0.33 μ F		RDJ G	LEAD WIRE (GREEN)	L:10m
DC196200	CAPACITOR C201 3.15V4.7 μ F		RDJ H	LEAD WIRE (GRAY)	L:10m
DC272800	CAPACITOR C103 50V 0.01 μ F		RDJ R	LEAD WIRE (RED)	L:10m
			RDJ W	LEAD WIRE (WHITE)	L:10m
			RDJ Y	LEAD WIRE (YELLOW)	L:10m
DR130100	RESISTOR R207	20K			
DR133200	RESISTOR R206	2K			
DR133600	RESISTOR R104, R106	1.5K			
DR134100	RESISTOR R103	12K			
DR174100	RESISTOR R205	9.1K			
DR174400	RESISTOR R201	13K			
DR176100	RESISTOR R107, R110, R203	5.1K			
DR176500	RESISTOR R101	51K			
DR176600	RESISTOR R102	43K			
DR176800	RESISTOR R105	47K			
DR177000	RESISTOR R109, R112	1K			
DR177100	RESISTOR R111	330			
DR177200	RESISTOR R202	27K			
DR177300	RESISTOR R204	240			
DR177600	RESISTOR R209	300			
DR064200	VOLUME RV501	2K			
• KR352000	RESISTOR R108	300			
• KR352100	RESISTOR R208	680			
DS003300	DIODE D101. 2. 3	IS1588			
DS028900	ZENNER DIODE ZD501	RD11E			
DS101600	VARISTOR VD501	IS1210			
DY018500	M SWITCH SW102	D2MQ-IL	= CE130100	MAIN BODY	D2
			= CE130200	B CASE	A2
			= CE130300	KNOB COVER	D1
			= CE132200	RS KNOB	A2
DP001800	BATTERY Ni-cd 12-S126		= DR176900	→ KR352000 R108	
			= DR177500	→ KR352100 R208	