

A

B

C

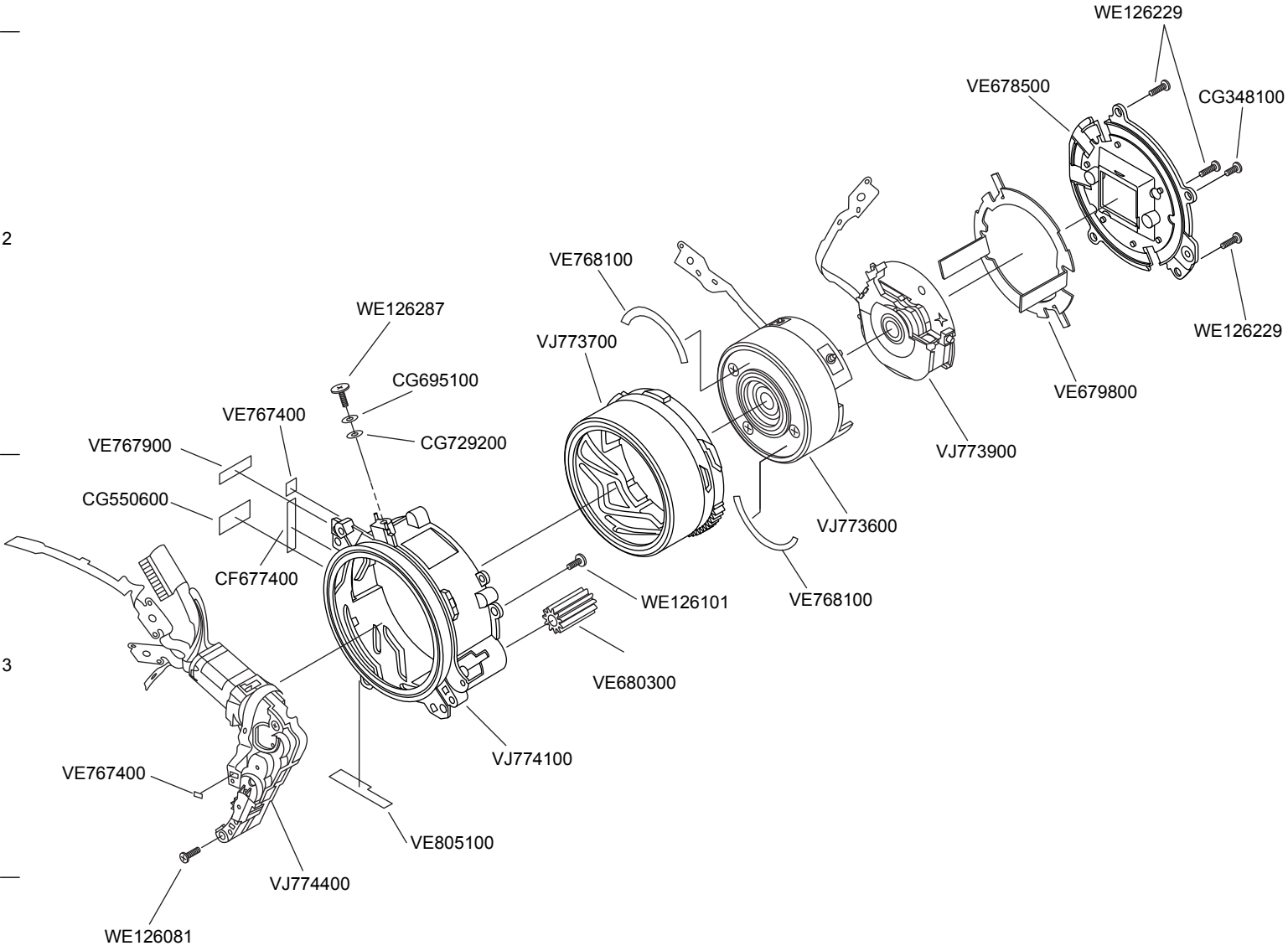
D

1

2

3

4



EXPLODED PARTS DIAGRAM

MODEL	FIG.
μ-mini DIGITAL / Stylus Verve	3/3
OLYMPUS IMAGING CORP.	

Ver.1  
2004.10

## PARTS LIST

μ-mini / Stylus Verve

REF NO	PARTS NO	DESCRIPTION	REMARKS	NOTE
	CF659300	Diopter Rubber	1-D3	NEW
	CF677400	SH Tape	3-A3	
	CG290500	634M Insulator	1-A3,1-B3	
	CG336800	THB1635	1-A4	NEW
	CG337000	THB1640	2-C4	
	CG348100	THB1630	1-A2, etc.	
	CG395400	RC Screw	1-C2	NEW
	CG454700	540LCD Tape	2-D2	
	CG550600	RSW Tape	3-A3	NEW
	CG691800	Nut	1-A4	NEW
	CG695100	Connect Plate	3-B2	
	CG703700	Inner Rubber	1-B1	NEW
	CG711900	W Tape	1-D2,etc	NEW
	CG729200	Connect Rubber	3-B2	
	KC372400	Capacitor	2-A3	NEW
	LV209700	LPF	2-D3	NEW
	VE484600	ShaftScrew	1-C1	
	VE642500	199ShaftPlate	1-C1	
	VE676600	CCD Rubber	2-D3	NEW
	VE677700	1Z Cover Ring	2-A4	NEW
	VE678500	C Holder	3-D2	NEW
	VE679300	LPF Holder	2-C3	NEW
	VE679400	LPF Sheet	2-D4	NEW
	VE679800	Float Key	3-D2	NEW
	VE680300	Long Gear	3-C3	NEW
	VE680900	Barrier Base Shaft	1-C3	NEW
	VE681000	Barrier Arm Spring	1-D2	NEW
	VE681100	Barrier Spring	1-C3	NEW
	VE681200	Barrier Pin	1-B3	NEW
	VE681300	Barrier Base1	1-C4	NEW
	VE681600	Barrier Arm	1-D3	NEW
	VE681700	Barrier Shaft	1-D3	NEW
	VE681800	Barrier link	1-A3	NEW
	VE681900	Barrier Rail Cover1	1-B3	NEW
	VE682000	Barrier Rail Cover2	1-B4	NEW
	VE682100	Barrier Ring Gear	2-B4	NEW
	VE682200	Barrier Ring Gear Holder	2-A4	NEW
	VE682400	Barrier Arm Lever	1-D3	NEW
	VE684600	Top Cover	1-B1	NEW
	VE684700	Top Metal	1-C3	NEW
	VE684900	Card Inner Cover	1-C1	NEW
	VE685000	Card Inner Cover Shaft	1-C1	NEW
	VE685400	M Dial Shaft	1-D1	NEW
	VE685700	Strap Holder	1-D1	NEW
	VE685900	Battery Holder	1-C1	NEW
	VE686000	Battery Holder Spring	1-C1	NEW
	VE687100	Battery Shaft	1-B1	NEW
	VE688000	Battery Case	2-B3	NEW
	VE688100	Battery Terminal A	2-B3	NEW
	VE688200	Battery Terminal B	2-B3	NEW
	VE688300	Battery Spring	2-A2	NEW
	VE688600	Speaker Sheet	1-D2	NEW
	VE688700	Microphone Rubber	1-D3	NEW

## PARTS LIST

μ-mini / Stylus Verve

REF NO	PARTS NO	DESCRIPTION	REMARKS	NOTE
	VE689000	Speaker Base	1-A2	NEW
	VE701800	J-PCB	2-B3	NEW
	VE702800	Earth Plate A	2-C2	NEW
	VE702900	Earth Plate B	1-A4	NEW
	VE703200	ST Tape1	2-A2	NEW
	VE710200	MCPA1-HS	2-B3	NEW
	VE710300	MCPA2-HS	2-C3	NEW
	VE766700	Trigger Tape1	2-C1	NEW
	VE766800	Trigger Tape2	2-B1	NEW
	VE766900	Capacitor Tape1	2-A3	NEW
	VE767000	Capacitor Tape2	2-B3	NEW
	VE767100	Trigger Tape	2-B2	NEW
	VE767400	Release Tape	3-A3	NEW
	VE767600	LCD Sponge1	1-C2	NEW
	VE767700	LCD Sponge2	1-B2,1-D2	NEW
	VE767800	LCD Tape	1-B2,1-C2	NEW
	VE767900	K Tape	3-A2	NEW
	VE768100	1Z Tape	3-C2,3-C3	NEW
	VE804300	TFT Contact 1	1-A3	NEW
	VE804400	TFT Contact 2	1-A3	NEW
	VE804500	220 Insulation Tape	1-D1	NEW
	VE804900	220Cover Sheet1	2-B1	NEW
	VE805000	220Cover Sheet2	2-B1	NEW
	VE805100	Base Frame Tape	3-B3	NEW
	VE805200	TFT Contact 3	1-A3	NEW
	VE806100	EMI Cushion1	2-D1	NEW
	VE806500	PW Shield Tape	2-B1	NEW
	VE807200	ST Shade	1-D1	NEW
	VE815300	Barrier link2	1-A3	NEW
	VE815400	Barrier link3	1-A3	NEW
	VE890300	EMI Shield	2-D1	NEW
	VJ752600	MIC-UT	1-D3	NEW
	VJ773000	TFT-UT	1-C3	NEW
	VJ773600	1Z Frame-Assy	3-C3	NEW
	VJ773700	Cam Frame-Assy	3-C2	NEW
	VJ773900	2Z Frame-Assy	3-D2	NEW
	VJ774100	Base Frame-Assy	3-B3	NEW
	VJ774400	Gear Case-Assy	3-B4	NEW
	VJ774500	Lens#	2-B4	NEW
	VJ774700	Release Button#	1-D2	NEW
	VJ774800	Front Cover#	1-D4	NEW
	VJ775000	Trigger#	2-B2	NEW
	VJ775100	ST#	2-A3	NEW
	VJ775200	CCD#	2-D3	NEW
	VJ775500	PW-PCA	2-A2	NEW
	VJ775600	MC-PCA	2-C1	NEW
	VJ775700	Power Button#	1-D1	NEW
	VJ775800	Battery Cover#	1-B1	NEW
	VJ776200	SW FPC#	1-B3	NEW
	VJ776300	M Dial#	1-D1	NEW
	VJ776500	Back Cover#	1-D2	NEW
	VJ776600	Front Metal# (μ, Silver)	1-C4	NEW
	VJ808500	Barrier Base	1-B3	NEW

PARTS LIST

μ-mini / Stylus Verve

REF NO	PARTS NO	DESCRIPTION	REMARKS	NOTE
	VJ808900	Barrier Metal#R (Silver)	1-D4	NEW
	VJ829000	Barrier Metal WH#R (White)	1-D4	NEW
	VJ829100	Barrier Metal OR#R (Orange)	1-D4	NEW
	VJ829200	Barrier Metal B#R (blue)	1-D4	NEW
	VJ829300	Barrier Metal R#R (Red)	1-D4	NEW
	VJ829400	Barrier Metal BK#R (Black)	1-D4	NEW
	VJ829500	Front Metal J-WH# (μ, White)	1-C4	NEW
	VJ829600	Front Metal J-OR# (μ, Orange)	1-C4	NEW
	VJ829700	Front Metal J-B# (μ, Blue)	1-C4	NEW
	VJ829800	Front Metal J-R# (μ, Red)	1-C4	NEW
	VJ829900	Front Metal J-BK# (μ, Black)	1-C4	NEW
	VJ830000	Front Metal U# (Stylus, Silver)	1-C4	NEW
	VJ830100	Front Metal U-WH# (Stylus, White)	1-C4	NEW
	VJ830200	Front Metal U-OR# (Stylus, Orange)	1-C4	NEW
	VJ830300	Front Metal U-B# (Stylus, Blue)	1-C4	NEW
	VJ830400	Front Metal U-R# (Stylus, Red)	1-C4	NEW
	VJ830500	Front Metal U-BK# (Stylus, Black)	1-C4	NEW
	WE115133	PUK1.6x3SN	2-C2	
	WE115538	PUK1.6x2.5SN	1-C2	
	WE126081	PUTB1.6x4SN	1-B1,etc	
	WE126101	PUTB1.6x3SN	3-C3	
	WE126102	PUTB1.6x3.5SN	2-A2 ,etc	
	WE126116	PUTB1.6x4.5SN	2-B2,2-C4	
	WE126135	PUTB1.6x2.8SN	1-A3,1-B4	
	WE126175	PUTB1.6-430SN	1-A3	
	WE126229	PUTB1.6-235SN	3-D1,3-D2	
	WE126269	PUTB1.6x5.5SN	1-D4	
	WE126287	PUTB1.6-640SN	3-B2	
	WE126447	PUTB1.4x7SN	1-D1	NEW
	WE126448	PUTB1.6x455SN	1-B1	NEW
	WE126449	PUTB1.6-628SN	1-D2	NEW
	WE153032	PUTW1.6x2.2SN	1-B3	
	VT959300	Rated Label J		NEW
	VT959400	Rated Label U		NEW
	VT959500	Rated Label E		NEW
	VT959600	Rated Label G1		NEW
	VT959700	Rated Label A		NEW
	VT959800	Rated Label T1		NEW
	VT959900	Rated Label H1		NEW
	VT989800	Rated Label G2		NEW
	VT960000	Rated Label K		NEW
	VT960100	Rated Label C		NEW
	VT960200	Rated Label White J		NEW
	VT960300	Rated Label White U		NEW
	VT960400	Rated Label White E		NEW
	VT960500	Rated Label White G1		NEW
	VT960600	Rated Label White A		NEW
	VT960700	Rated Label White K		NEW
	VT960800	Rated Label White C		NEW
	VT960900	Rated Label Orange J		NEW
	VT961000	Rated Label Orange U		NEW
	VT961100	Rated Label Orange E		NEW
	VT961200	Rated Label Orange G1		NEW

## PARTS LIST

μ-mini / Stylus Verve

REF NO	PARTS NO	DESCRIPTION	REMARKS	NOTE
	VT961300	Rated Label Orange A		NEW
	VT961400	Rated Label Orange K		NEW
	VT961500	Rated Label Orange C		NEW
	VT974700	Rated Label Blue J		NEW
	VT974800	Rated Label Blue U		NEW
	VT974900	Rated Label Blue E		NEW
	VT975000	Rated Label Blue G1		NEW
	VT975100	Rated Label Blue A		NEW
	VT975200	Rated Label Blue K		NEW
	VT975300	Rated Label Blue C		NEW
	VT975400	Rated Label Red J		NEW
	VT975500	Rated Label Red U		NEW
	VT975600	Rated Label Red E		NEW
	VT975700	Rated Label Red G1		NEW
	VT975800	Rated Label Red A		NEW
	VT975900	Rated Label Red K		NEW
	VT976000	Rated Label Red C		NEW
	VT976100	Rated Label Black J		NEW
	VT976200	Rated Label Black U		NEW
	VT976300	Rated Label Black E		NEW
	VT976400	Rated Label Black G1		NEW
	VT980600	Rated Label Black A		NEW
	VT976500	Rated Label Black K		NEW
	VT976600	Rated Label Black C		NEW